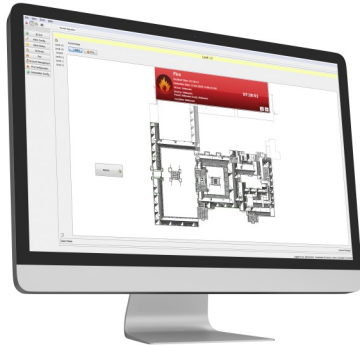


L@ti-View Graphics Application

PC Workstation Connectivity for Fire Alarm Network



DESCRIPTION

This professional-grade graphics system will complement the new generation of fire alarm control panels, while also being backward-compatible with the current analog product.

L@ti-View enables the creation of a 2D map of any site or building to monitor fire safety and detection, and automatically switches to an area where a fire device has been activated to allow immediate viewing and investigation of an event. It also displays the relevant emergency assembly and fire control points.

Fully-configurable on-site, L@ti-View supports dual screens allowing a dedicated screen for the 2D graphic map and a separate screen for system management. It also reports any configuration errors, ensuring that the graphics system is maintained and updated whenever the panel configuration is revised.

STANDARD FEATURES

- L@ti-View works with L@titude, FireNET and FireNET Plus panels.
- Reports configuration mismatch errors – ensuring that the graphics system is properly maintained and updated whenever there are any panel configuration revisions
- Powerful event log filtering and reporting
- Manage the state of the fire system using a combination of graphical images and system controls
- Programmable macro buttons to perform panel control operations
- Full map navigation using configurable buttons or map areas
- Device analog value reporting
- Perform device and zone disablements / enablements
- Operate and restore loop output devices for testing purposes
- Dual screen support for clarity

HOCHIKI ORDERING CODES

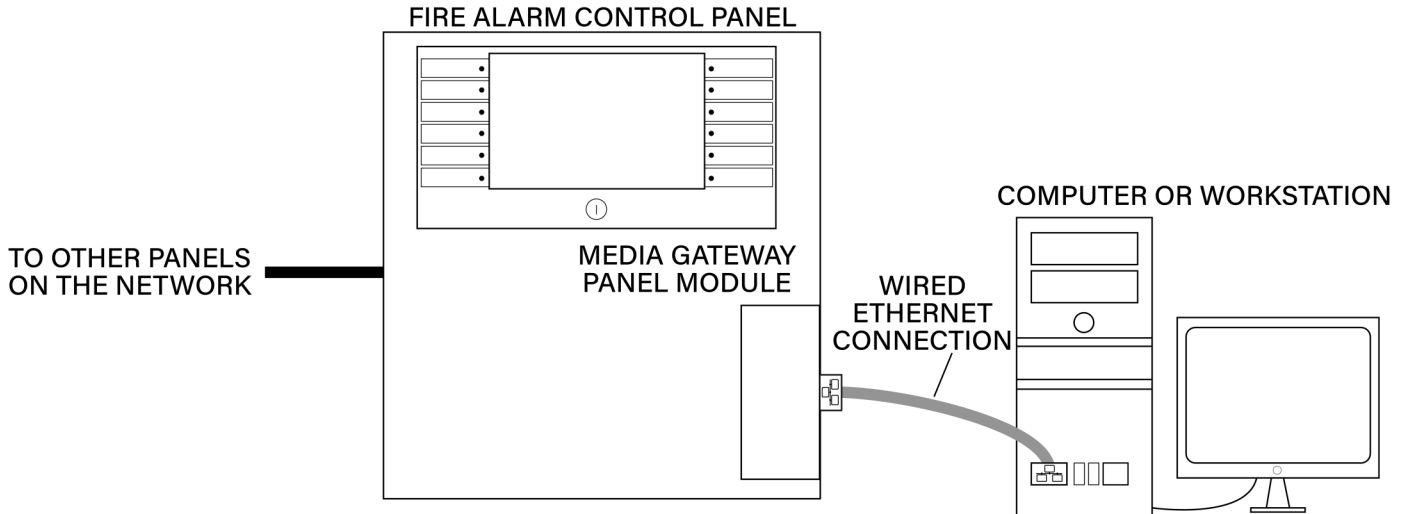
0101-02790	L@ti-View - L@titude (UL) based panels - 4 panel license
0101-02800	L@ti-View - L@titude (UL) based panels - 16 panel license
0101-02810	L@ti-View - L@titude (UL) based panels - 127 panel license
0101-02820	L@ti-View - FireNET (UL) based panels - 4 panel license
0101-02830	L@ti-View - FireNET (UL) based panels - 16 panel license
0101-02840	L@ti-View - FireNET (UL) based panels - 64 panel license

Specifications subject to change without notice.

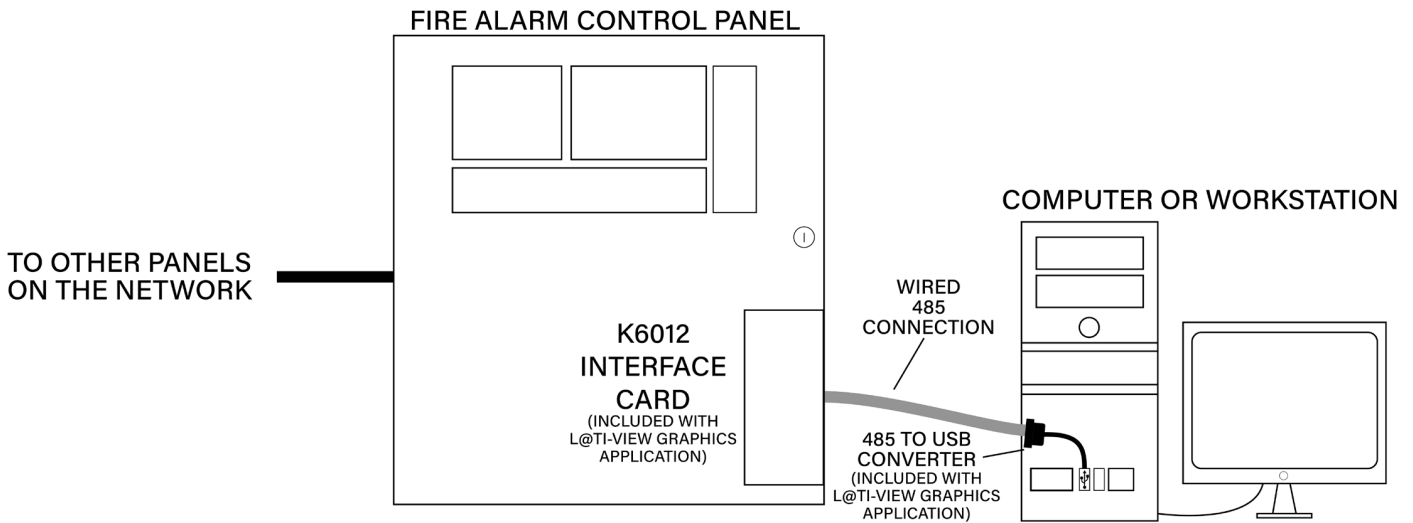
Continued on back.

L@ti-View Graphics Application

L@TITUDE WIRING DIAGRAM



FireNET WIRING DIAGRAM



PC REQUIREMENTS

Processor	CPU Intel® Core™ i5 64 bit CPU
RAM	16 GB
Hard Drive Size	500 MB
Display	1280 x 768
Ports	USB 2.0, and Ethernet (L@titude). An additional USB 2.0 port is required for a FireNET Panel.
Operating System	Windows 10 Pro 64 bit
Internet Connection	Internet connectivity is necessary to perform updates and to take advantage of some features.